

# SECONDARY SWITCHGEAR CONDUIT CONFIGURATION

REVISION: Updated Conduit Locations & Quantity

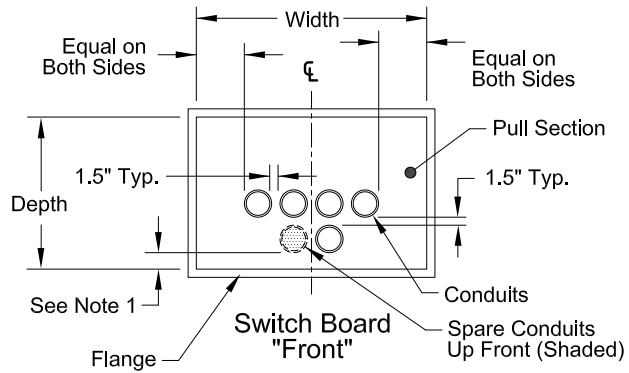
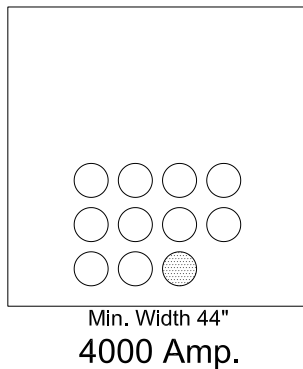
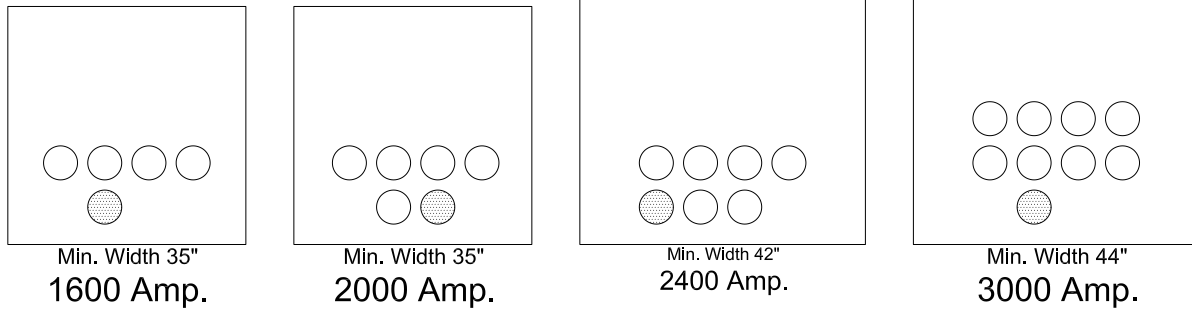
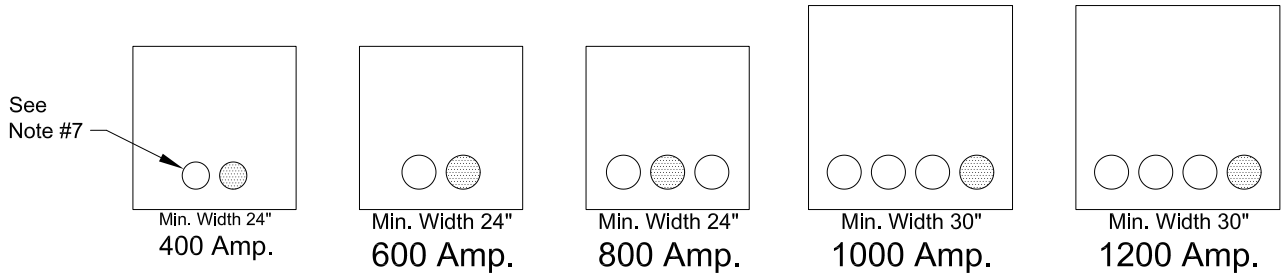
CHECKED BY (ENGINEERING): SJ

DATE: 12/14/15

CHECKED BY (FIELD): JH

PREPARED BY: SJR

APPROVED BY: *Stephen E. Gafond*



Notes:

1. Conduit placement in pullsection starts 1.5" behind flange in front of the pullsection.
2. Conduits shall be 2" to 4" above concrete, trench depth may increase with services requiring 1600 Amps and above, use of grade ring may be required.
3. Install grade rings as necessary in order to maintain minimum 24" cover over conduits (See UGS-100.1).
4. Conduits shall be within 1" horizontally of landing lugs.
5. It is the contractors responsibility to verify the width of the pullsection per EUSERC page 345, Rev. 8 before installing conduits.
6. Conduits shall be 1.5" apart to allow for end bells and be centered in the width of the pullsection.
7. The 400 Amp pullsection is served by 4" conduit. All other pullsections are served by 5" conduit.