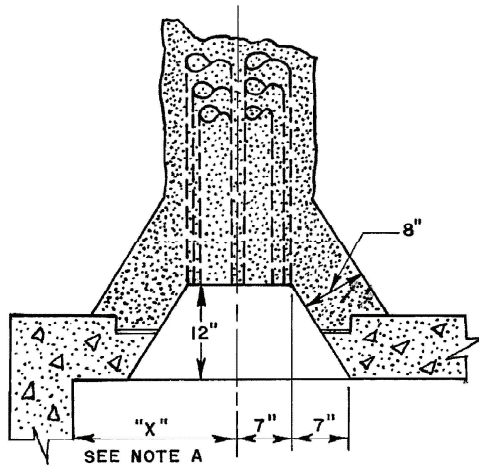


STANDARD DUCT ENTRANCE DETAILS

REVISION: Updated Format & Notes
 Marked for Maintenance Only

CHECKED BY (ENGINEERING): SJ
 DATE: 08/28/18

CHECKED BY (FIELD): JH
 APPROVED BY: *Stephen E. Saford*
 PREPARED BY: SJR

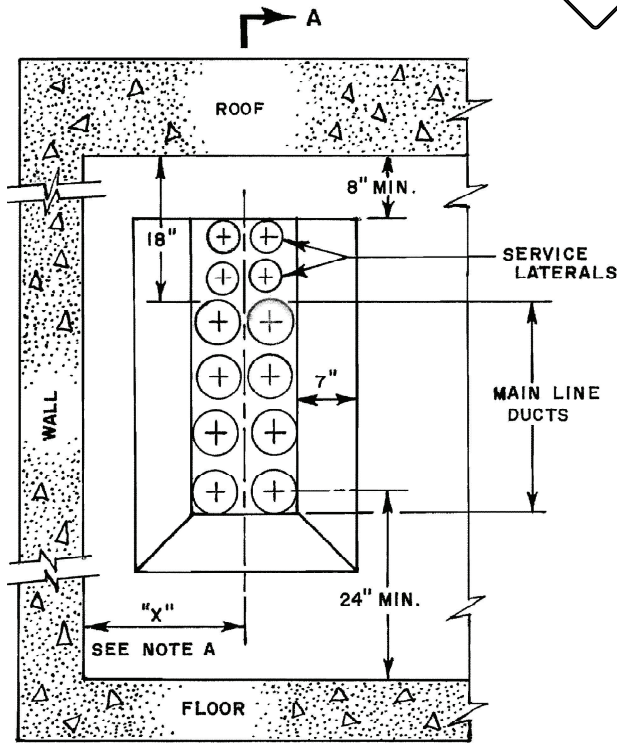


PLAN SECTION

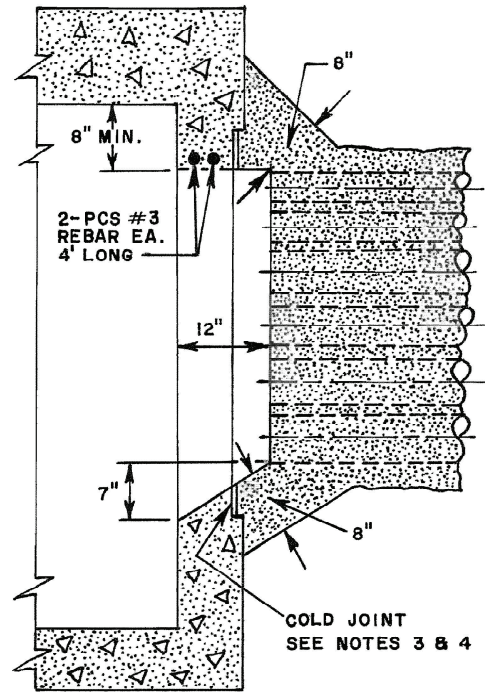
Note "A"

Dimension "X" is normally (unless otherwise specified on working drawings) for:

- Manholes:
 - on end-walls-24"
 - on sidewalls 7"
- Vaults: on sidewalls & end-walls 14"



ELEVATION



SECTION "AA"

Notes:

1. For Entrances Adjacent to 45° Angle Corners See UGS-110.2
2. For Pullbox Entrances See UGS-110.4 For Entrances Adjacent to 45° Angle Corners See UGS-110.2 For Pullbox Entrances See UGS-110.4

New Construction

1. Move steel to clear openings, move vertical steel to sides of opening, cut horizontal steel and bend ends back into window and/or duct envelope.
2. See working drawings for number, location and special arrangement of ducts, Etc.
3. Cast keyway approx. 4" wide and 2" deep in outer wall around duct entrances when cold joint is used.
4. Seal cold joints between structure walls and duct bank envelope using 2 coats of "Sikaseal" (1 Gal.) black liquid.

Old Construction

1. At interceptions, bevel edges of old concrete in wall and duct bank (cold joint same as note 4), finish recess smooth.