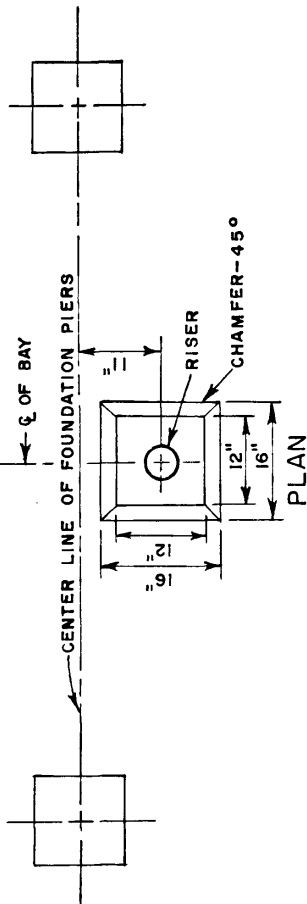


RIVERSIDE PUBLIC UTILITIES DEPT.—UNDERGROUND STRUCTURES

UNDERGROUND RISERS IN SUBSTATION  
(SHEET 1 OF 2)

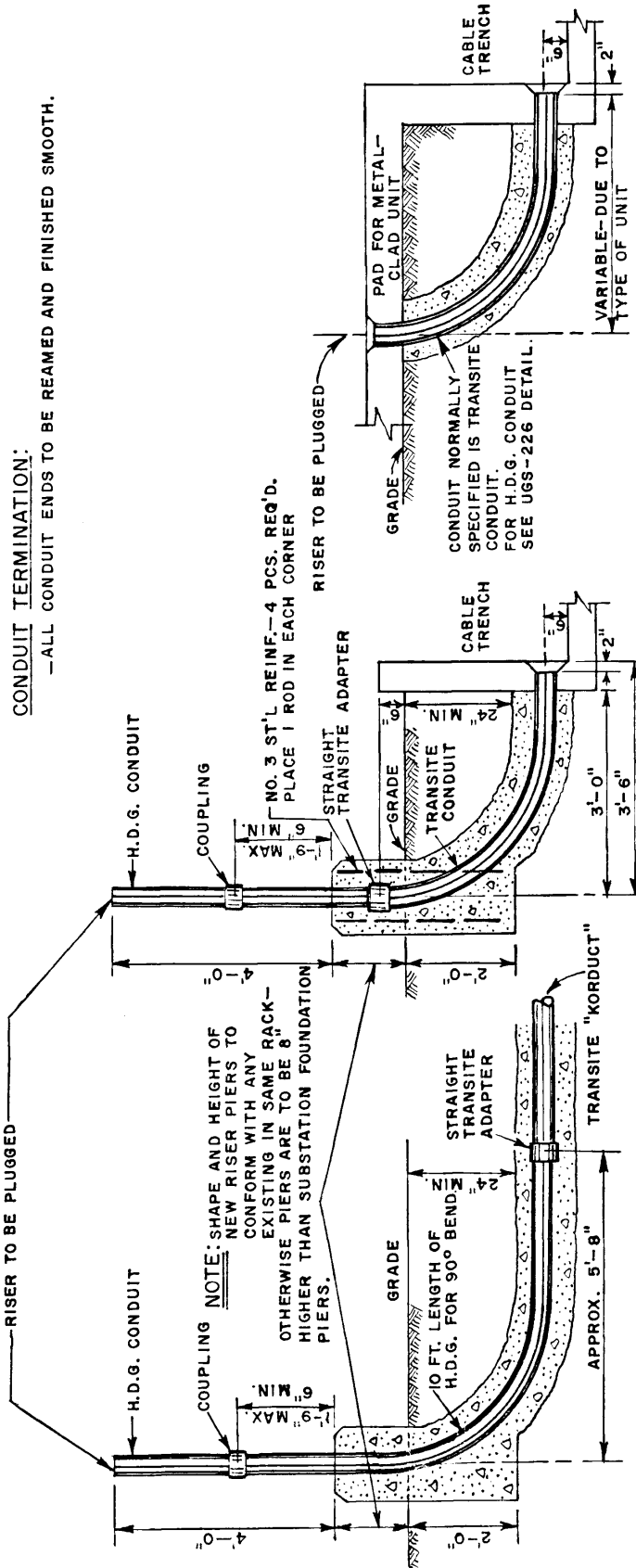
2-1-67



NOTES

- DUCT:
- ALL DUCT TO BE 4" I.D.
  - ALL DUCT RUNS TO BE OF TRANSITE KORDUCT.
  - BENDS TO HAVE 36" MINIMUM RADIUS.
  - MATERIAL:—TRANSITE CONDUIT
  - HOT DIP GALV. CONDUIT
- CONCRETE:
- 4" CONCRETE ENVELOPE FOR ALL BURIED CONDUIT.
  - SEE UGS-015 NO. 2000 OR 2001.

- GROUNDING:
- FOR RISER GROUNDING SEE UGS-226
- CONDUIT TERMINATION:
- ALL CONDUIT ENDS TO BE REAMED AND FINISHED SMOOTH.



DETAIL NO. 1 FOR DUCT RUNS OVER 30 FT.

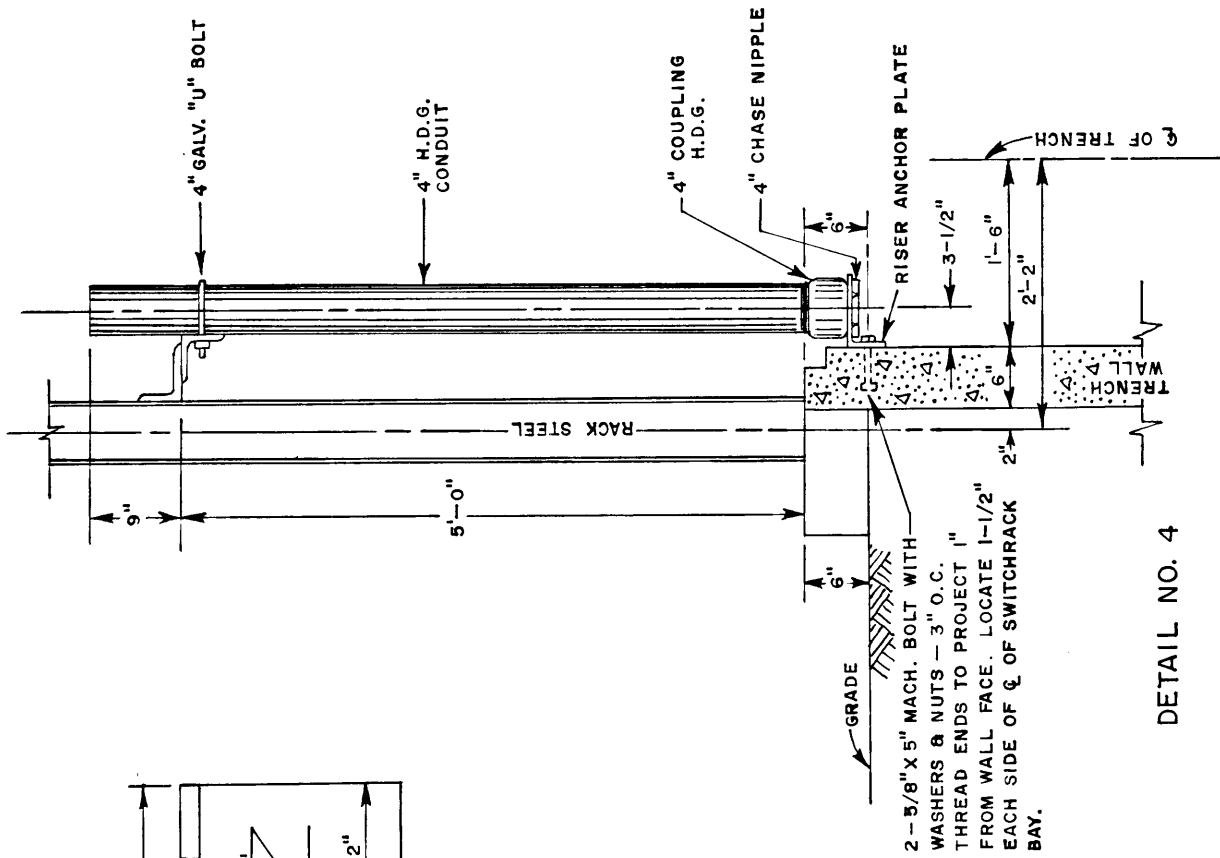
DETAIL NO. 2 FOR DUCT RUNS TO TRENCH OR LESS THAN 30 FT.

DETAIL NO. 3 RISER FOR METAL-CLAD UNIT

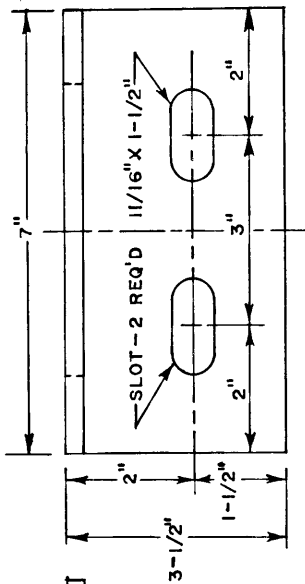
UNDERGROUND RISERS IN SUBSTATION  
(SHEET 2 OF 2)

2-1-67

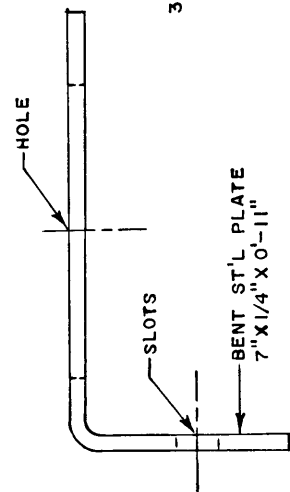
RIVERSIDE PUBLIC UTILITIES DEPT.-UNDERGROUND STRUCTURES



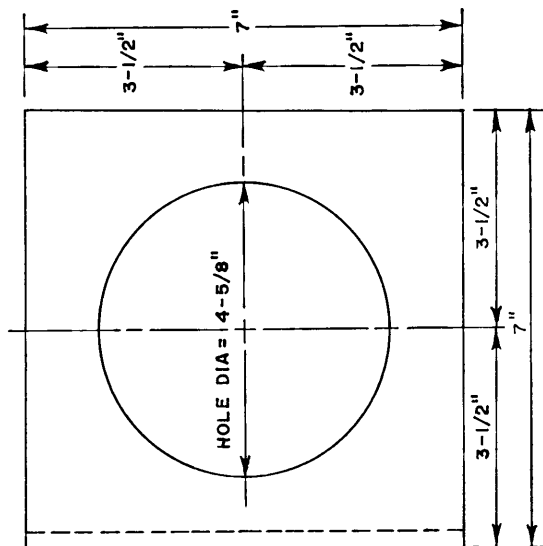
DETAIL NO. 4



FRONT ELEVATION



SIDE ELEVATION



PLAN

DETAIL OF RISER ANCHOR PLATE

(FOR USE - SEE DETAIL NO. 4)